

# MB STUDIO

MB STUDIO © 2004 MB SOFT 7.208 MB SOFT Mode:AUTOMATIC MB ...

MBStudio Edit PlayList View MB SPOT Window ?

Date / Signals: MARTEDI 19 OTTOBRE 2004

Intro / Elapsed Time: --:--:57

Remaining time: --:06:19

Current Time: 01:12:54

**CHARAMIRA FEAT YASEMIN - VIENI IN SICILY**

e: Y:\Canzoni2004\GennaioSettembre2004\CHARAMIRA FEAT YASEMIN - VIENI IN SICILY.mbs - Language: English - Genre: DANCE - Year: 2004

PLAY PLAY ALL AUTOPLAY **AUTOMATIC** NEXT STOP

Time:	Item:	Intro:	Duration:
01:19:11	TIZIANO FERRO & JAMELIA - UNIVERSAL PRAYER	--:14	--:04:02
01:23:13	format%dn%02.mp3		
01:23:13	WHIRLPOOL VS OCTAGEN - ALASKA	--:--	--:08:46
01:32:00	format%dn%03.mp3		
01:32:00	JOE COCKER - FIRST WE TAKE MANHATTAN	--:17	--:03:38
01:35:39	format%dn%04.mp3		
01:35:39	AMANDA LEAR - ENIGMA	--:39	--:05:01
01:40:41	format%dn%05.mp3		
01:40:41	GOBLIN - DEATH DIES	--:--	--:04:25
01:45:06	format%dn%06.mp3		

01:12:40 - TCP Connection  
Close connection 81.174.13.23

PlayList  
0100-lumamegive\_MB RADIO NIGHT - Repeat -

**Bush Accuses Kerry of Scare Tactics - 6:16 p.m. ET<**

Y:\Canzoni2004\GennaioSettembre2004\CHARAMIRA FEAT YASEMIN - VIENI IN SICILY.mbs - Language: English - Genre: DANCE - Year: 2004 Stereo 192 Kbits 44100 Hz

Quick start guide - Last revision: 14 September 2004

All rights reserved. Any part of the present documentation cannot be reproduced, transmitted, transcribed, memorized or translated in any language or programming language, in any form or with any mean, optic, electronic, magnetic, biological, chemical, mechanic, acoustic, manual or other, without authorization written of:

MB SOFT - Via XX Settembre 33 - 18038 SANREMO - ITALY

## THE MAIN WINDOW



On the top of the main windows there 4 text box:

- \* Current Date or Game port Bits (that is' a really contact closing on game port, example an impulse coming from a sat receiver)
- \* INTRO of the currently playing song or the elapsed time of current on air item
- \* REAMINING TIME to the end of the currently on air item (in some case this value is not available, for instance an internet stream with unknown length)
- \* CURRENT TIME



This is the scroll bar that allows you to change the play position of the on air item (in some cases it is not possible to change position, for instance audio file of unknown duration or streams coming from Internet)



This is the description of the current on air item.

In the case of disk files the exact path is visualized



These buttons determine the mode of operation of MB Studio (manual - semiautomatic - automatic)

**PLAY**

Manual. It play the first item of the list.

If there are more items in the list you can click it multiple times to enqueue the following items; right click to undo the operation.

**PLAY ALL**

It plays all the items in the list, ignoring scheduled playlists or breaks (MB SPOT).

**AUTOPLAY**

It plays all the items in the list; it automacally insert breaks scheduled with MB SPOT. Scheduled playlists are still ignored.

**AUTOMATIC**

Fully automation mode . It plays all the items in the list; breaks and playlists are automatically loaded.

**NEXT**

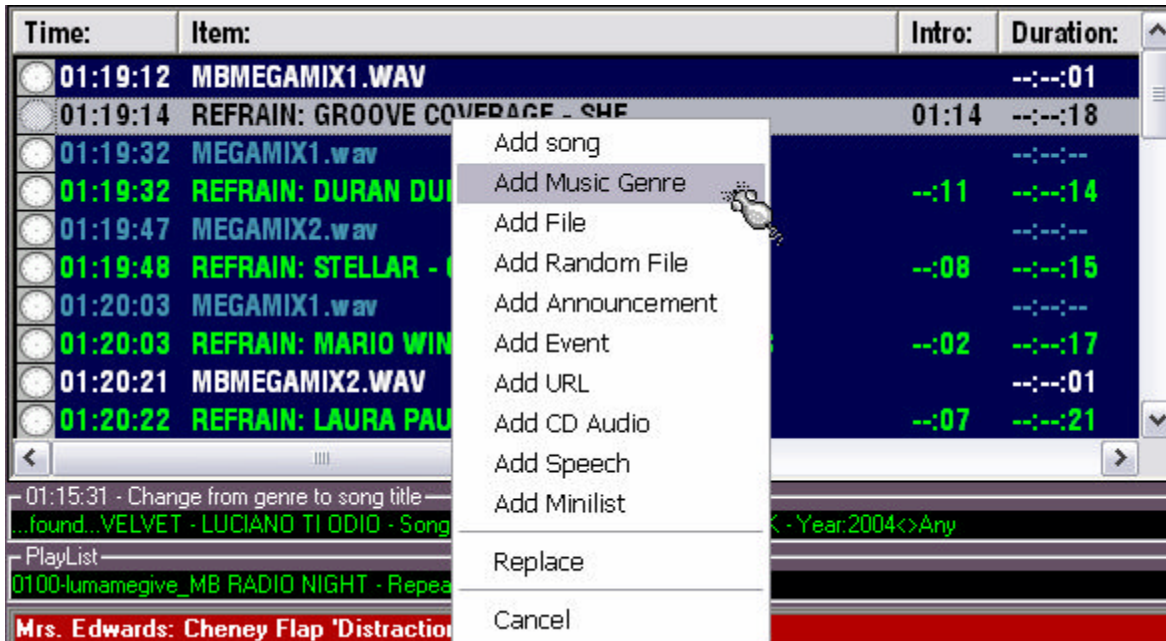
Stop the current play and skip to next item.

**STOP**

Stop playing. The program remain idle waiting for user action.

**||**

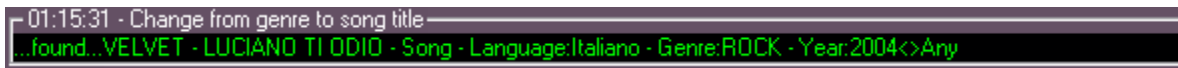
Pause playing.



The on air list will show you all queued items.

Click the loudspeaker icon to prelisten an item. (you need a second audio card or a card with second output)

Left click an item to insert a new item or remove/replace it.



In this section MB Studio display the last internal operation that was performed.



In this section MB Studio display the title of the current playlist.



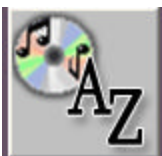
This is the NEWSLINE; a section in which it is possible to display the latest news coming from some web sites. An active internet connection is required. Just choose a channel from the combo box.



This icon open LIVE PLAYLIST for LIVE ASSIST mode.



This icon display the breaks list scheduled with MB SPOT.



This icon display the list of the songs



This icon open the list of sms messages received



When this icon is active, the songs starts from their **INTRO** point rather than from their **START** point



When this icon is active, the songs starts from their **START REFRAIN** point rather than from their **START** point and they finish when they reach the **STOP REFRAIN** point. If a song doesn't have a **REFRAIN** point this icon is ignored.



This icon enable/disable the song announcement (both with pre recorded files or speech synthesis).



This icon lock/unlock one or all commands of MB STUDIO.



This section allows to insert/overposing inputs of the audio card.



This section display the next scheduled break or playlist .

## THE ITEM TYPES

To manage to the best all the available resources, different type of items are used for distinguish a jingle from a song or from an external source or an iternet stream.

To add a new item to a playlist or to a break, left click on the desired position:

- Add song
  - Add Music Genre
  - Add File
  - Add Random File
  - Add Announcement
  - Add Event
  - Add URL
  - Add CD Audio
  - Add Speech
  - Add Minilist
- 
- Replace
- 
- Cancel

### ADD SONG

open the list of the songs and it allows you to choose one or more titles

The screenshot shows a window titled "LIST of 14693 SONGS - Last saving on: martedì 19 ottobre 2004 - 01.02". The window contains a table of songs with the following columns: Artist, Title, Language, Genre, Year, Rate, Added on, Intro, and Duration. The table is sorted by Artist. Below the table are filter options for Artist, Language, Genre, and Year, and a keyboard navigation interface with a "QUEUE TO PLAYLIST" button.

Artist	Title	Langu...	Genre	Year	Rate	Added on	Intro	Dur...
BEN HARPER & THE BLI...	WICKED MAN	English	EASY	2004		2004.10.18	--:10	03:29
CAPARIZZA	IO DO LA VITA AND HO CART...	Italiano	EASY	2004		2004.10.18	--:28	03:57
JASON ANGELO	GIVE IT UP	English	DANCE	2004		2004.10.18	--:17	03:27
LENNY KRAVITZ	CALLING ALL ANGELS	English	SLOW	2004		2004.10.18	--:32	05:08
THE SCORANT	LIQUITY	English	ROCK	2004		2004.10.18	--:14	03:37
BLACK DARS	READY TO GO	English	DANCE	2004		2004.10.17	01:18	06:51
DAVIDE DE MARINIS	FACCIO FATICA	Italiano	EASY	2004		2004.10.17	--:10	03:51
GWEN STEFANI	WHAT YOU WANTING FOR	English	EASY	2004		2004.10.17	--:02	03:33
LOLA PONCE	AMOR	English	EASY	2004		2004.10.17	--:08	03:54
MANFRICK	LOVELY STAR	English	DANCE	2004		2004.10.17	--:28	04:08
MAX DI ANGELO	LEWASS	Italiano	EASY	2004		2004.10.17	--:10	02:40
MR	DISCO TIZER	English	DANCE	2004		2004.10.17	01:14	04:54
NEW TASTE	I KNOW	English	DANCE	2004		2004.10.17	--:58	05:01
NORAH JONES	THOSE SWEET WORDS	English	SLOW	2004		2004.10.17	--:20	03:17
PROMISE LAND WS NETZ...	WORDWITS	English	DANCE	2004		2004.10.17	--:--	03:18
RAIZ	W.C.P.	English	EASY	2004		2004.10.17	--:--	03:48
SEAL	WALK ON BY	English	EASY	2004		2004.10.17	--:08	03:08
SIMONE	GIORNI	Italiano	EASY	2004		2004.10.17	--:11	03:48
SLEAZY PEWS FEAT NA...	LET THE BEAT	English	DANCE	2004		2004.10.17	--:58	04:41
TINA TURNER	ORNA AGNS	French	EASY	2004		2004.10.17	--:20	03:58

From this window it is possible to display, select, add, modify, remove and delete the songs from/to the database.

The songs are usually listed in alphabetical order but you can change this order left clicking on top of the following columns:

Artist -

Title -

Language - Language of the song (Example: Italiano, Français, English or Any)



Genre - A musical genre free entered from user (max 10 characters)

Year - Year of publication

HITS - Number of play

Added on – Addition date

INTRO - Intro of the song (that it's the time between the start and the beginning of the vocal)

Duration – this is the track length

HITLIST - Number of forced transmissions in a day

Expiration – Expiration date of the previous HITLIST field

REFRAIN – length of REFRAIN range

MUSICLINE – requests count (with MUSICLINE service)

The colors representation of the songs have the following meaning:

**BLUE: FOREIGNER SONG**

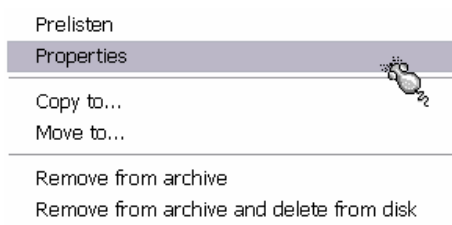
**GREEN: NATIONAL SONG**

**GREY: ANY LANGUAGE**

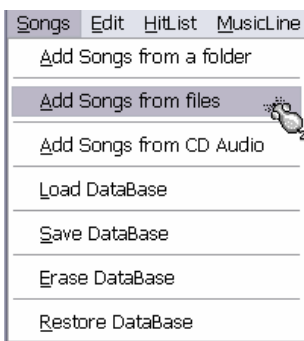
**BLACK: Dissuaded choice (to prevent repetition artist or title)**

Double click on a song to add it to the playlist.

To add multiple songs, just select it (CTRL+left click) then click QUEUE TO PLAYLIST



Right click a song to get a menu that will allow to prelisten or modify the properties or to remove a song from the database and eventually to also cancel it from the hard disk.



To add new songs to the list, use menu Songs / Add songs.

You can Add Songs from a folder or Add Songs from files selecting one or multiple files.

In both cases MB STUDIO will not load a song if is already present in the list.

You can also rip an audio track using Add Songs from CD Audio

It's a good idea to Save DataBase once you added new songs or changed songs properties.

In emergency case, you can revert to the latest saved databases using Restore DataBase

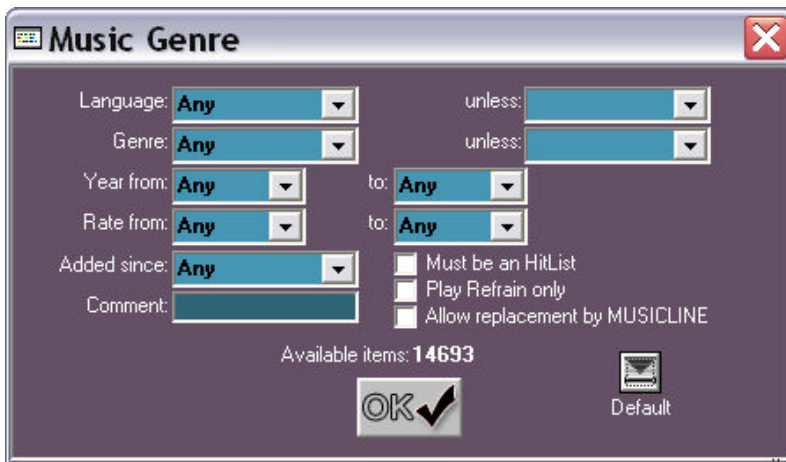


Right click any song and select Prelisten or Properties to set Artist, Title, Language, Genre, Year, Comment, Rate, Set In, Intro, Refrain In and Out, Out song....and many more.....

You're free to create your custom genres, just click into genre box and enter the new genre with the keyboard, the next time it will appears already listed.....

The more accurate will be your inputs, the more versatile will be your playlists.

Notes: we advice you to keep all your song files stored in one folder or in few folders; you must consider that MB STUDIO cannot manage more than 128 folders, so if you your files are stored in a folder for each artist, you will not be able to use it with MB STUDIO.



### ADD MUSIC GENRE

Add a random selected song to the playlist specifying one or more parameters that will condition the choice of the song.

Pay attention to the number of available songs, an insufficient number it would cause annoying songs repetition

Standard

### ADD FILE

Overlap at end

Voice Track mode 1

Voice Track mode 2

Executable File

Add a file from hard disk or local network. You can specify different type of play like Standard, Overlaps, Voice Track. For further details see the section mix.

Cancel



### ADD RANDOM FILE

This window allows to add a random file to the playlist; it is possible to choose any genre or a specific genre.

Click "Edit Random Files" to add/modify/delete the files list

Use this list to add jingles, station breaks, promo, etc. Do not add songs to this list unless you know what you are doing.

Time Announcement

### ADD ANNOUNCEMENT

Date Announcement

Add an automatic announcement to the playlist.

Song Announcement

The time announcement requires a set of prerecorded files announcing hours and minutes.

Cancel

When the "Time Announcement" is on air MB STUDIO:

1) first it looks for a file called hoursminutes.mp3.

2) if not found it looks for hours.mp3 and minutes.mp3

Example at 10:15 it looks for Hours1015.mp3 then it looks for hours10.mp3 and minutes15.mp3

So, generally, you have to prepare a set of files called from hours00.mp3 to hours23.mp3 and

from minutes00.mp3 to minutes59.mp3. To have a specific announce at a specific time just record the announce and save it as hoursxxyy.mp3 where xxyy is the needed time. Ex: to make a special announcement for midnight save it as hours0000.mp3.

The Date Announcement requires a set of prerecorded files announcing the weekday (Monday.mp3, Tuesday.mp3, etc), the day number (1.mp3, 2.mp3, 3.mp3, etc), the month name (january.mp3, february.mp3, etc), the year (2004.mp3, 2005.mp3, etc).

All the files can be saved as .wav or .mp3 or .ogg or .wma

All the folders containing the files must be listed in the MB STUDIO / Configuration / Folder otherwise the announcements will fail



#### ADD EVENT

Through this window it's possible to add the following objects:

EXT1 - EXT2 - EXT3 - EXT4

Add audio from a line in of the audio card, ex: "Line In", "Microphone", "Aux", etc.

This command is used to play audio coming from a satellite tuner or from a radio tuner or from another studio. Before using these commands, it is necessary to configure the correct card audio and the relative inputs in the configuration of MB Studio in the section "External Sources."

#### REFRAIN

This object will play the refrain of first song of playlist. It's frequently used before a break, to play the refrain of the song that is queued after the break.

#### DELAY

This object will pause MB Studio for a certain time specified in the field "Expected duration"; using 00:00:00 MB Studio will stay in "Delay" mode indefinitely.

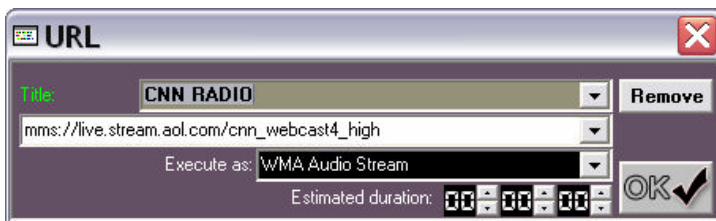
The "delay" mode will exit clicking NEXT or STOP, or receiving a Bit from the game port, or receiving a SMS Remote Control or when it reaches the time of a break with "force" option enabled. This command is commonly used to stop the automation and waiting for one of the above events.

#### SEQ

You can manually set the insertion point of a break into a playlist. During the normal operation, MB Studio automatically manages the moment and the position of the playlist in which a break is inserted, nevertheless if you prefer, you can disable this automatic system and manually place the break in the playlist; in the selector "Seq" you have to choose the desired break and then click OK. Do not forget to disable the automatic insertion of breaks; you can do it through the agenda or from the properties of an item.

#### DUMMY

This is a "virtual" event, when it is broadcasted nothing happen, the software will skip it but you can use it in some cases where you need to set some property without the association to an audio file



#### ADD URL

Specifying an internet address you can play a live audio stream from the net (ex: you can rebroadcast a web radio on your station, or make live connections with an external stream).

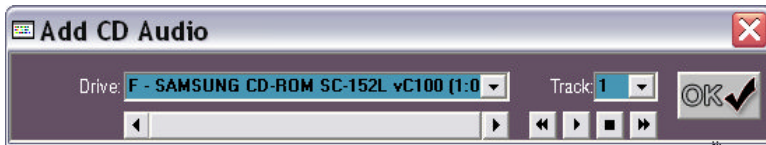
The option "Execute as" play live audio streams in the format WMA or MP3/Shoutcast Stream.

If you use this command to play a live stream coming from our MB RECORDER application, you must select the WMA format.

In the field Title you can enter a title that help you recognize more easily the site or the channel that you want to connect.

This command doesn't serve to download Internet files, for such function you have to use the Download manager.





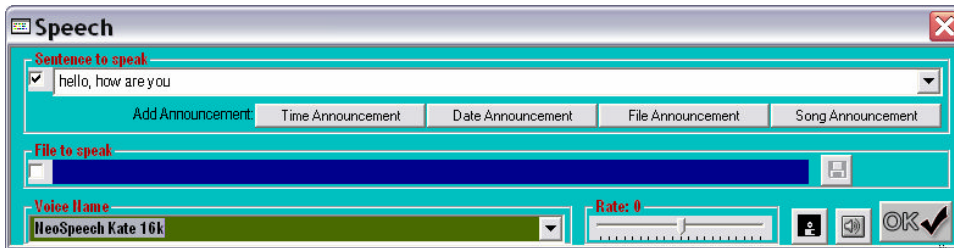
#### ADD CD AUDIO

Read an audio track by a CD Audio insert in a cd drive.

Select the CD drive unit and the track number to play. You can prelisten the

track (through the monitor card if correctly configured in MB STUDIO configuration).

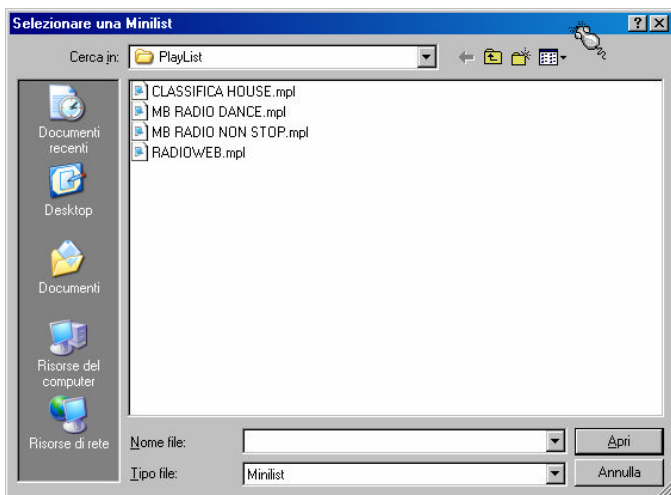
Do not use this command to save audio track to disk; for that operation go to the songs list and select menu Songs / Add Songs from CD AUDIO.



#### ADD SPEECH

Speak a sentence or a text file with a synthetic voice in the computer. Checking the box "Sentence to speak" it is possible to enter a sentence or to select a

previous sentence; checking the box "File to speak" click on the disk icon to select a text file. In the Voice Name you must select a synthetic voice and the cursor Speed determines the read speed; the disk icon save the voice in a .wav file, while the icon of the loudspeaker prelisten the voice; click OK the add the voice to playlist.



#### ADD MINILIST

A MINILIST is similar to a playlist: a list of items to play, but it doesn't have a scheduled time or calendar. Imagine it as single item that include several sub-items. Once saved, a MINILIST can be inserted everywhere: in a break, in the on air playlist, or in another playlist.

To create a minilist to use the menu Playlist/Playlist editor

# PLAYLIST EDITOR

Select menu Playlist / Editor to create a new playlist or minilist or to modify or delete any of them

A playlist is a list of max 300 items that MB Studio will play at scheduled times and days that you decide. It's good to have at least one playlist otherwise MB STUDIO will play fully random music.

You can create many playlists, with different contents. When MB Studio is in AUTOMATIC MODE, the system will look the playlist folder for a PlayList scheduled to current date and time.

Playlist items could be music genres, specific song titles, audio filese, random files, internet streams, events, automatic time or date announcements, speech announcements, etc.

The breaks scheduled through MB SPOT have nothing to do with the playlists and will be transmitted independently; then in the playlists you only have to worry about planning music, jingles and shows.

If needed, at anytime you can disable tha automatic insertion of breaks into your playlist, by enabling the flag "disable breaks" in any of the playlist items; you can also manually insert a break into a playlist using menu "Insert Event" and selecting the event SEQ and selecting the desired break. Remember to enable again the automatic insertion of breaks on the properties of last playlist item.

So, now...compile the list according to your own demands.



## Starting Time

This is the scheduled time in which MB Studio will load the playlist.

It is not said that MB Studio will start play it at that time, in fact usually MB Studio attends that the current on air item ends, so consider that your scheduled time could be delayed by few minutes.

As you will see later, if you require that the playlist start exactly at the scheduled time, you must activate the option "Cut current play at startup"

Note: MB Studio only loads playlists when is running in AUTOMATIC mode.

### Week / Calendar

Here you can select days of the week MB Studio has to load this playlist.  
If you click Calendar you can set a specific date.

### Title

Enter here the playlist title.

### Comment

Enter here a free comment.

### New Playlist or Minilist

Pressing this button, the actual list will reset to an empty list and you can start compiling a new list.

### Change from genre to song title

If there are genres in the actual list, (added with "Add music Genres"), click this button to immediately process the playlist and turn the genres into corresponding titles.

ATTENTION: if you now save the list, you'll always play those titles; do not use then this function if you are not certain of what is doing. This is only useful to experienced consumers that need to produce daily playlists previewing titles that will be broadcasted.

### Saves as Minilist / Playlist

It will save the current list as minilist or playlist.

### Keep original playlist

Sometimes you would need to duplicate a playlist scheduling a new copy at a different time or day. To do this, just load the original playlist, make all the changes you need than enable this flag and save as playlist. A new playlist will be created and the original will stay unchanged.

### OPTIONS

#### Repeat

At the end, the playlist will reload and restart.

Usually the musical playlists should have this flag active. You can insert just few music genres and let the playlist to cycle all the hours you need,

The flag should be instead disabled if the playlist concerns a talked shows or specific song titles unless you don't need to cycle it too.

#### Cut current play at startup

if you require that the playlist start exactly at the scheduled time, you must activate this option

#### Wait for previous playlist to completed

It always attends that the preceding PlayList is completely finished. Depending on the previous playlist length, your starting time could be remarkably delayed.

#### Shuffle song titles

This flag has only effect if your playlist contain song titles and you need to play them in a random sequence.

Do not use this flag if you have created a PlayList of music genres.

# LIVE PLAYLIST

Live playlist is a special playlist that contains a list of items to use for live assist. You can create as many lists as you want, each list could be customized for any user. To play an item click one of the buttons under the "Click to PLAY" column or press the corresponding function key.



Depending on the following options, an item could immediately play, overlap, or insert in the on air playlist.

- \* Play now – the item that is currently on air will fade out and this item will play immediately
- \* Overlap – this item will play overlapping the on air item
  - Push - this item will play until you hold the left mouse key
  - Multiplay - every click to the item will start a new play, otherwise the new play will stop the previous.
- \* Send to N.1 - the selected item will be inserted at the top on the on air playlist, so it will play as soon as the current on air item finishes.
- \* Send with mouse – you can insert the item into on air playlist clicking in the desired position.
- \* Do not allow playlist changes – When enabled, the current list cannot be modified.

Title - Select an item of the list and enter a title to help item identification.

Comment - A free comment.

Load - It loads the selected live playlist

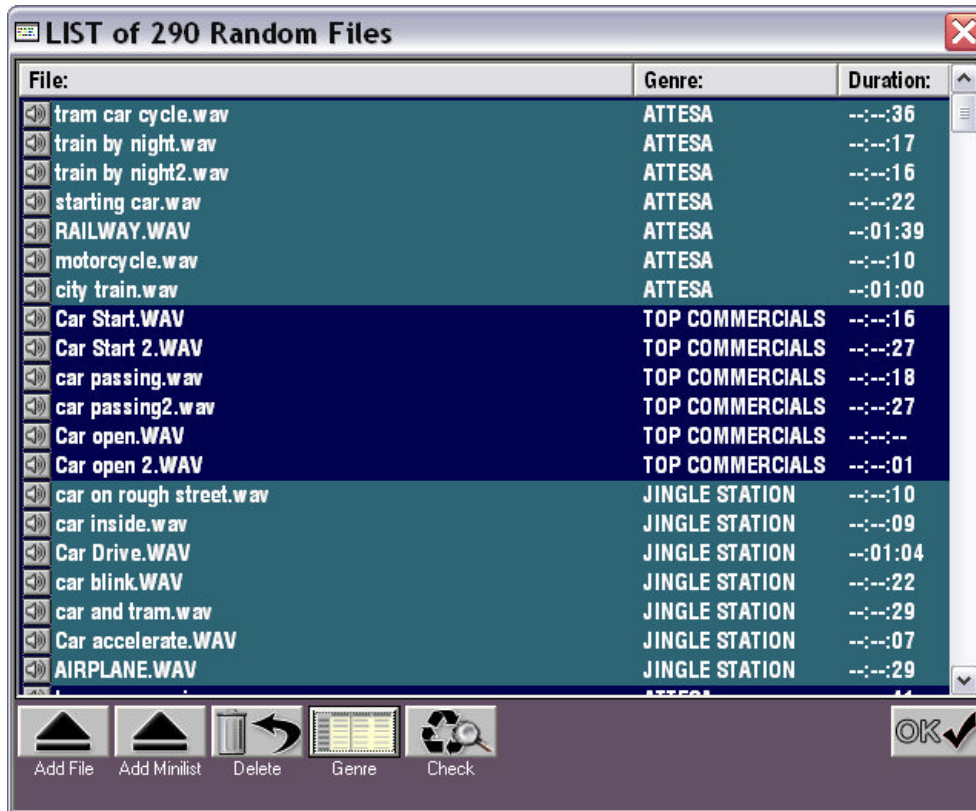
Empty - The whole actual playlist will be erased from memory

Save - Save the current live playlist to disk.

## RANDOM FILES

MB Studio is able to manage a list of random files that can be recalled in a random order avoiding boring repetitions; here you can add files or minilist assigning a genre, so that is possible to recall a random file of a given genre from a playlist.

Some files could for instance be inserted with genre "Morning", others with genre "Afternoon" and others with genre "Evening"



To load a random file to this list click Add

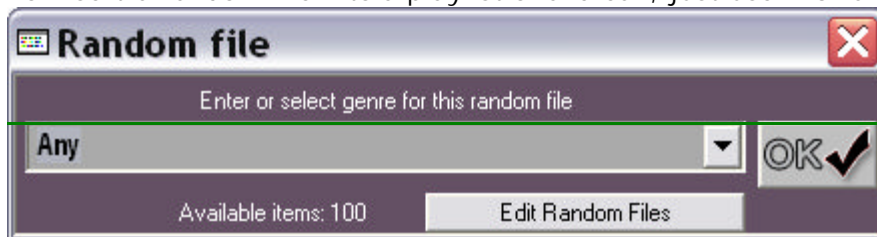
To remove one or more random files from this list, select them and click Remove

To assign or modify the genre to one or more random files, select them and then click Genre

To verify that all the files are present on the disk, click Check

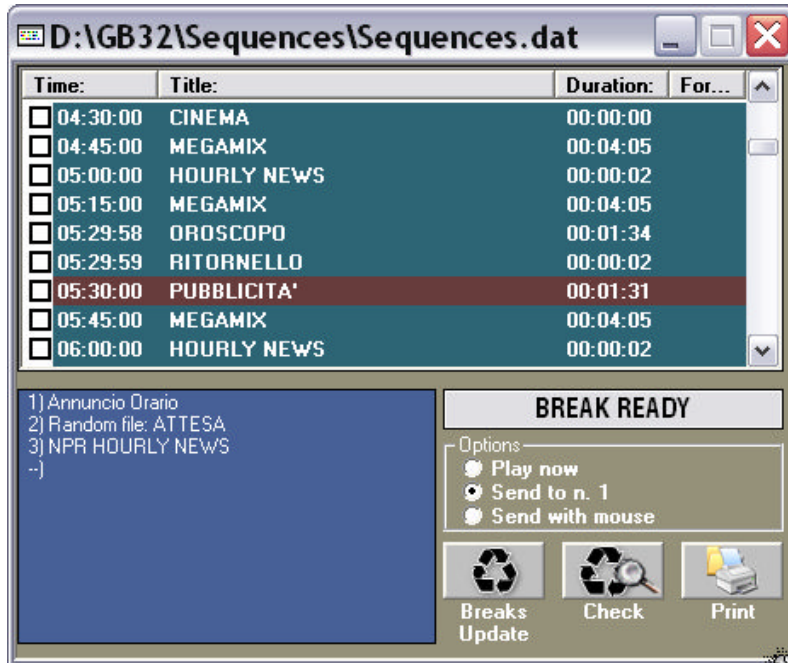
After any change, click Save

To insert a random file into a playlist or a break, just use menu Add Random File





## BREAKS



Display the current breaks list. This list is created by MB SPOT. The list include break time, title, duration and forcing time. The check indicates that break has been "played"; it is possible to manually change the state of the break with the mouse.

To manually insert a break to the on air playlist, select it from the list, and then click PLAY.

Depending on the following options, a break could immediately play, or insert in the on air playlist.

\* Play now – the item that is currently on air will fade out and this break will play immediately

\* Send to N.1 - the selected break

will be inserted at the top on the on air playlist, so it will play as soon as the current on air item finishes.

\* Send with mouse – you can insert the break into on air playlist clicking in the desired position.

If MB Studio is on STOP or PLAY or PLAY ALL mode and you reach the time for a break to be spotted on air, the window automatically display flashing a notice "Break Ready"; the user can now click the flashing button.

If MB Studio is on AUTOPLAY or AUTOMATIC mode, the break is automatically added to on air playlist.

To disable automatic insertion of breaks select the menu "Edit / Disable breaks"

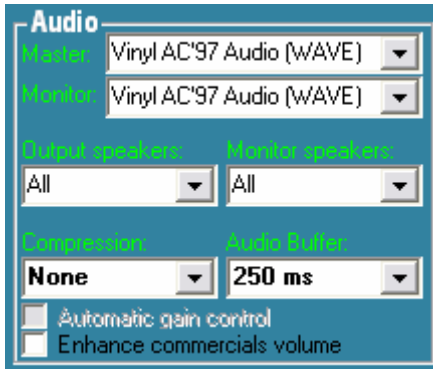
When the automatic insertion is disabled, you can use "Add Event SEQ" in your playlists.

The Breaks Update button reload the breaks list from disk. This operation is automatically performet at midnight, nevertheless if you have just made some changes with MB SPOT you can apply changes immediately, clicking this button.

The Check button verify that all the files scheduled in the breaks are really present in one of the folders configured in MB Studio/Configuration/Folders

The PRINT button sends the breaks list to the printer.

## MB STUDIO CONFIGURATION



### AUDIO

Master: set here your main audio card that is used to go on air.

Monitor: set here a second card for prelisten

Speakers: if the master audio card support multiple outputs you can decide to play audio on the first output (Front), or second exit (rear) or both (all)

Compression: MB Studio can maintain a constant output modulation; the compression ratio can vary from Soft to Hard.  
Audio buffer: the main audio buffer length, the default value is 500ms. You need to change this value only if you experience audio noises or skips.

Automatic Gain Control: help to maintain a constant modulation.

Enhance commercials volume: It exalts the volume of the commercials: when this function is active, the items with property/statistic "Commercial" play to full volume and the whole other items play with a lower volume; it is useful for shops, stores, everywhere the music has to have a lower volume compared to commercials. The radio stations should never activate this function.



### CROSSFADE

PRE START When MB STUDIO play 2 consecutive audio files with Standard properties, it play without overposing the end of first file to the begin of the second. Due to your computer latency, you could hear a little gap between the files. Gap duration depends on your hardware configuration, it could be greater on a PII 300 Mhz, it will be lower on a PIV 2 Ghz. So you

have to set the PRE START slider in order to avoid any gap between 2 audio files (having STANDARD play mode properties); note that if you exceed the PRE START value, you'll have an overpose effect between the files; you can use the time announcement as a good test to set the correct PRE START value; if minutes announcement overpose the hours announcement you must decrease the PRE START value; if you hear a noticeable gap between hours and minutes announcement, then you must increase PRE START value.

Usually this value range from 0.2 to 0.4....

Note that this slider don't affect voice track, backgrounds or general overlaps.

### OVERLAP AT END

If you set the properties of an audio file to OVERLAP AT END, once the playing file reach the STOP position (that you can set in the PRELISTEN window), the following item will start play overposing this file. If you have not set a STOP position, you can set a default STOP position for all files (that have OVERLAP AT END in the playproperties).

Ex: if you set this slider to 1 second, and you play a file of 10 seconds duration, when the file reach 9 seconds, MB STUDIO will start the following item.

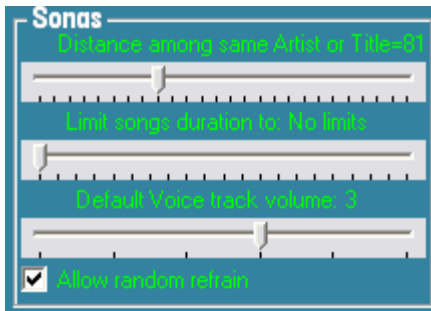
This value don't affect audio files where you set custom STOP position.

Usually you can set this slider to 0.8 ... 1.2

Silence Detect. You can set the global silence detection value: 0=disabled, 10=medium value, 20=high detection. This apply to all audio files that MB STUDIO will play.

If you prefer to keep silence detection on, excluding some item, just set the item properties to "No Mix". The item will play ignoring the global silence detection value.

This control doesn't have some effect on the external sources.



### Distance among same Artist or Title

Each song is internally marked as "played" once is on air. A song will not repeat itself until it's possible.

So, when scheduling music with "Add genre", MB STUDIO will try the best effort to search a song that is still to play, but there are some rules to respect: the most important is the "Distance among same Artist or Title" (in the configuration panel). This rule act to keep a distance from songs of the same artist...so if now John Lennon is on air and your artists cache is set to 20, it

means that you won't listen John Lennon again, before 20 songs from other artists has been broadcasted. Although John Lennon could be on air 20 songs later, it will not be the same song, cause MB STUDIO will look for a John Lennon song that is still not played.

Anyway if you suspect of illegal songs repetition, send us the debug indicating the suspected song and broadcasted times and we will tell you where is the problem.

Frequently, people try to schedule a genre with only few songs and this will cause that songs to be annoying on air....

### LIMIT SONGS DURATION TO

Once a song reach this length (minutes:seconds) it will fade out. 0=Unlimited length

You can automatically enable/disable/modify this value on certain days or times using Agenda.

### DEFAULT VOICE TRACK VOLUME

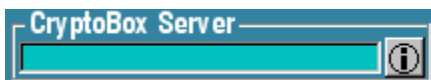
During voice track, it is desirable to low the music level to a volume that is adjustable with this cursor and it goes from 0 (no attenuation) to 5 (maximal attenuation).

This is a global value, so when you insert a voice track into a playlist it will automatically keep this value. However you can assign a specific value to every voice track item, entering the item properties and changing the "Volume Decrease"

### ALLOW RANDOM REFRAIN

MB Studio feature the event REFRAIN that allows to play the refrain of a song; normally you have to set REFRAIN START and REFRAIN STOP to each song.

If this option is enabled, when a song don't have a valid REFRAIN START and STOP, MB Studio will choose arbitrarily a part of song and it will use it as refrain.



### CRYPTOBOX SERVER

when purchasing multiple licenses, all your licenses are stored in a unique Crypto Box USB dongle. The dongle will serve licenses to other computers in the LAN. When you run MB STUDIO in a second computer, you must enter here the IP address or Name of the computer where the Crypto Box USB is plugged; in this way, if you have purchased more than one license, you can use the license of MB Studio on more computers.



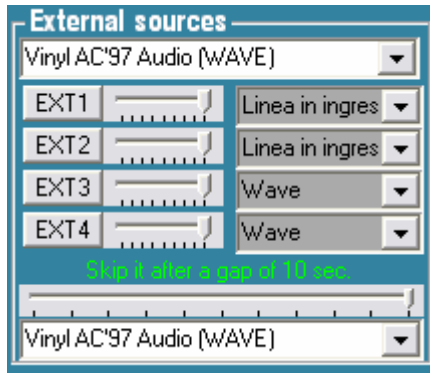
### SPLIT

Installing more copies of MB Studio in different computers networked between them, it is possible to "split" commercials or news-bulletins for different broadcast areas. The main computer has to be set as Master while all the secondary computers must be set as Slave.

The box "Split Master IP" must be set in the slave computers only and it points out the address IP or the name of the master computer.

The box "Remote Flag IP" is not related to split function, it is used when you need to send an impulse of commutation to a remote PC running MB Studio; enter here the IP address of destination computer.

A possible use is to send a "NEXT" command to a remote MB STUDIO; you must set "send NEXT" flag in the properties of an item

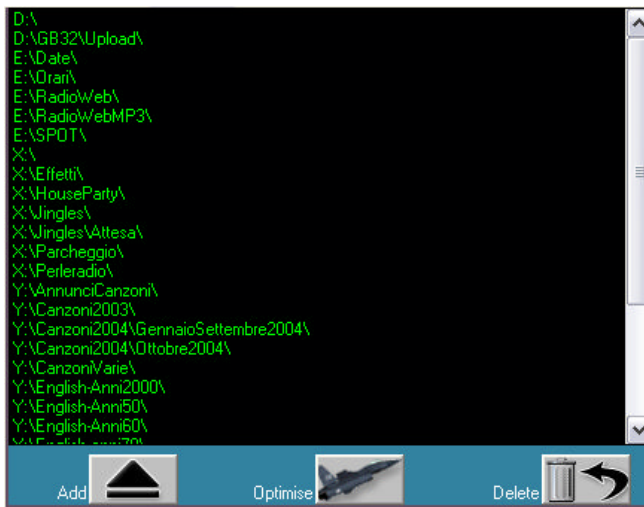


#### EXTERNAL SOURCES

This panel manage up to 4 audio channels EXT1... EXT4. These channels correspond to the inputs of your audio card and they serve to play satellite programs, live shows, or live speak using a microphone.

You need to select the card audio to use; note that you must use the same audio card selected in Audio Master. The names of the card inputs will appear (example Line in); assign the desired inputs from EXT1 to EXT4 and adjust the needed volume.

The cursor "Disable gap control" allow to set a silence detection.



#### FOLDERS

This is the list of all the folders where you store audio files to play with MB STUDIO. You can add up to 128 folders, that can be local or in a network.

When MB Studio must play a file, it will search it on the folders listed here.

If the file is not found in any folder, an error message will inform you about the problem; in this case you have to carefully check that the folder where the file is stored, be listed here.

Due to this real time file search, we advice you to not use too much folders. The more you populate the list the more MB STUDIO could slow down in some operations.

So, please check the list and remove any

useless folder. The "OPTIMIZE" button will remove not existing folders from the list.



#### MB STUDIO WORKING FOLDER

In this box you have to select the folder that contain the databases. Usually this is the folder where MB STUDIO is installed and running.

But if you're using MB STUDIO in a second computer and you want to manage databases of the main computer, you must select the network folder of the main MB STUDIO installation.

Example:

we have installed MB Studio on the host computer named STUDIO1 and on a second computer client named MIKE and a third computer named PAUL.

The working folder of the main computer could be C:\MBStudio\ (that is the folder MB STUDIO is installed)

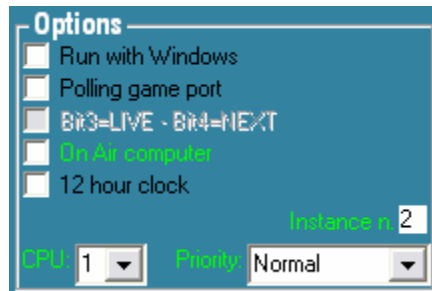
The working folder on MIKE and PAUL computers must be \\STUDIO1\C\MBstudio\

Pay attention to keep option "On Air computer" enabled on the main computer only and disabled on all other computers.

When you need to use MB STUDIO from multiple computers in your local network, just install it on each computer using MBStudioInstall.exe package.

To change the working folder just left click the box.

After you changed this setting, we recommend to quit and restart MB STUDIO without save any data.



#### OPTIONS

Run with Windows

When this flag is active, MB Studio will automatically run as soon as Windows is loaded.

Polling Game Port

If you have connected an interface to the game port of the computer, this flag must be enabled so that MB Studio can detect the incoming relay contacts, also called bits (bit 1, bit 2,

bit 3, bit 4).

If you unplug the cable from the game port this option will disable automatically to avoid system slow down.

On Air Computer

If you're using MB Studio on a computer that is the main computer, enable this flag. Disable it when using MB STUDIO on a secondary computer for management.

12 hours clock

Display clocks in the format 0-12 rather than 0-24

Session n.

When running multiple instances on the same computer, every instance must use a different number. The first instance usually has value 0. to run multiple instances, you must do multiple installations of MB STUDIO on different folders.



#### BEFORE/BETWEEN/AFTER BREAK

Radio stations usually needs to precede a break of commercials by a jingle or an announcement, besides they insert a jingle or effect among every commercial and the break ends with a jingle or announcement.

In these 3 boxes you can set an item to play before the break, among every commercial, and at the end of the break; left click the box to add an item or right click to remove it.

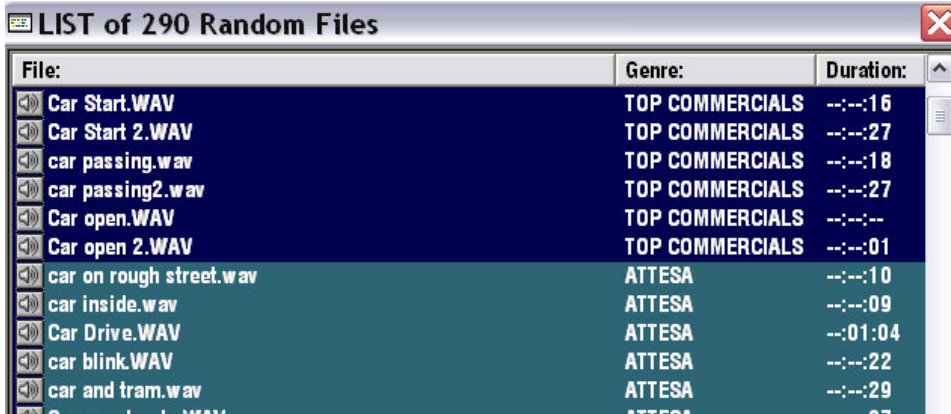
This setting is not enough. It also needs to specify in what break MB Studio will play these fileses. In fact there are breaks containing comemrcials, but breaks that contain other kind of items (news-bulletins, horoscope, shows, etc). Since we want to play these files inside commercial breaks only, you must enable or disable this function on each break; you open MB SPOT, you open a break that contains commercials and you enable the option "Before/Between/After", as in this example:





We now see a different situation, we suppose that we don't want to always play the same file

on top of commercials, instead we want MB Studio plays a random file from a list.

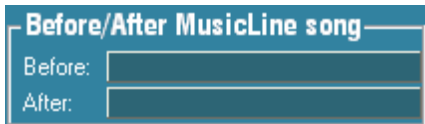


You must open menu Edit/Random Files, add all the files that you want to use at the top of the commercial breaks specifying the genre "Top Commercials" (it is only an example, you can use the genre that you want).

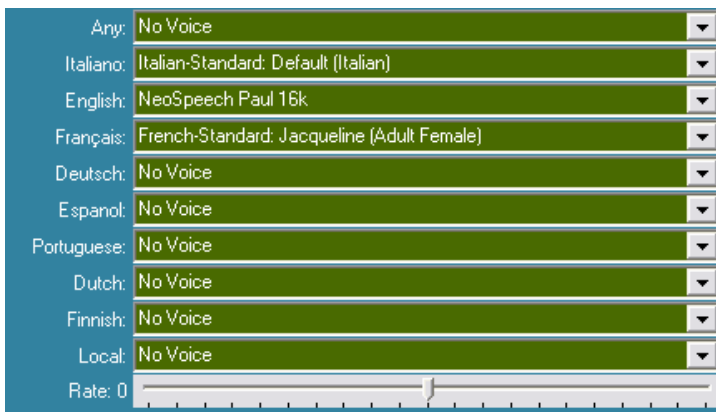
Then you have to return to menu MBStudio/Configuration and set this genre of random files:



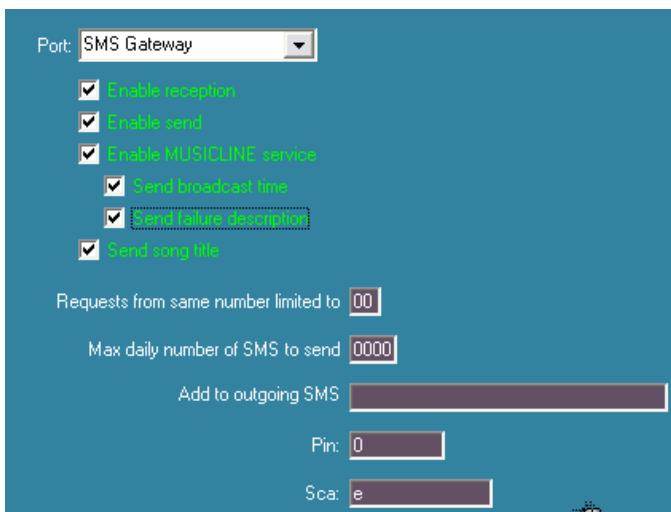
You can do the same with "Among" and with "After"



BEFORE/AFTER MUSI CLINE  
You can set items that will play before and/or after a song requested via musicline system



SPEECH VOICES  
In this box it is possible to assign a default synthetic voice for every language supported by MB Studio. These synthetic voices will be used for the automatic announcement of the songs (note that the songs must have a proper language set in the song properties). If you install new voices when MB STUDIO is running, restart MB STUDIO to allow new voice detection.



SMS  
MB STUDIO support SMS Management through the program SMS Gateway downloadable at <http://www.winsms.com/> or direct hardware control with the DIGICOM POCKET GSM modem, visit [www.digicom.it](http://www.digicom.it)

Install the program in your computer, then copy the executable SMSGateway.exe into MBStudio folder.

Select menu MBstudio/Configuration and activate the needed features

Enable Reception - enable incoming message detection

Enable send - enable outgoing messages to be sent (You can also schedule start/stop time of this service using menu Edit Agenda - Add - Internal Command)

Enable MusicLine - enable the music requests service (You can also schedule start/stop time of this service using menu Edit Agenda - Add - Internal Command)

Send confirmation time - when enabled, MB STUDIO will reply to any music request with informations about the scheduled broadcast time

Send motivation of failure - when enabled, MB STUDIO will reply to any music request with informations about the reason of deny

Send song title - when an incoming message include the word "title", MB STUDIO reply sending the title of the last broadcasted songs.

Requests from same number limited to.... this is the max number of music requests coming from the same number in a MUSICLINE session. 0=unlimited.

We advice you to set a limit otherwise someone could mass message the system and he'll waste all your phone credit.

Add to outgoing SMS A 64 characters string that will top any outgoing message. A sponsor or your station slogan will be fine here.

Selecting menu Edit/SMS Manager, it display the SMS messages library. The latest 1000 incoming messages are visible,. Availbale fields are: date and time, phone number and text message; you can assign a name to each number (click a number in the list and type the name in the text box "name" then click save).

You can sort the list by date/time, number, message.

You can send a message in the section "Send SMS"; just click a message and click Reply or enter number in the number text box; enter the message and click SEND. If you need to lock the SMS output to avoid abuse from your users, you can disable the option "Enable send" from MB Studio/Configuration.

there are 2 others option in the Name frame:

Unlimited MusicLine requests - selected user by-passes the "Requests from same number limited to..." on the MBStudio configuration

Ignore MusicLine requests from this number ban selected number from musicline service

The message list allow multiselection, so you can delete or print or reply mutiple messages at the same time.

If you need to send a message to multiple numbers, select the numbers in the list then click Reply, type the message and click SEND

Once SMS Gateway is running, you'll remark a typical icon in the status bar:



Double click it and it will show the SMS Gateway window.

Select menu Settings/communications and set the following fields:

Communications Port

COM Port Number

Speed

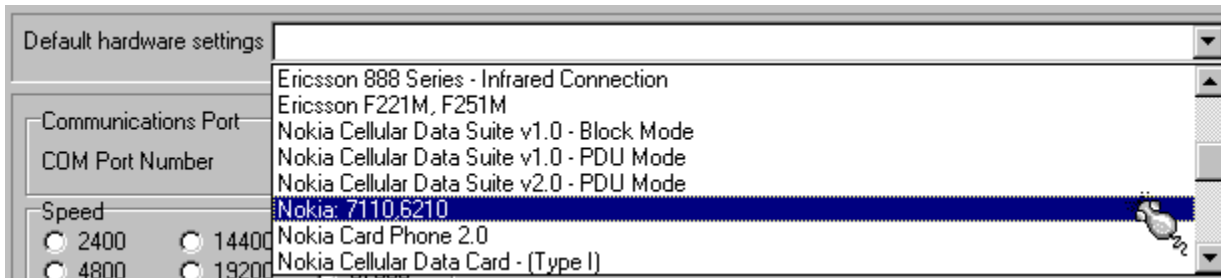
2400     14400     56000

4800     19200     57600

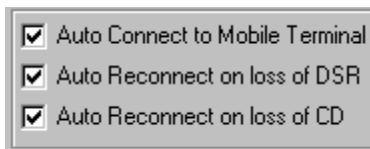
9600     38400     115200

Flow Control

Here you have to set the serial port number (usually 1 or 2) and the serial speed (according to your mobile phone)



Set here your phone model or similar. If you can't find any model of your phone company, try NOKIA 7110.

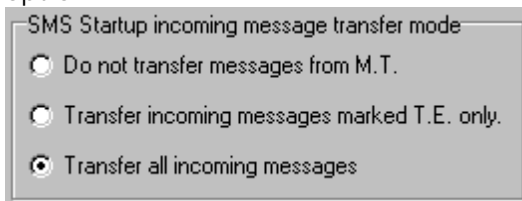


Set this options as showed



Enter here the PIN code of your SIM card (if needed)

Click OK to Communication Settings and select menu Settings/Message Options and set this option:



You're now ready to work with SMS.

#### WARNING:

Not all mobile phone are compatible with SMS Gateway application.

For professional non stop service we recommend to use a specific GSM MODEM. We successfully tested the DIGICOM POCKET GSM MODEM

<http://www.digicom.it/digisit/schedpro.nsf/ENProdottiIDX/pocketgsm?OpenDocument>

If you're unable to find this product or a similar product to your local sellers, contact us to purchase the product directly from us.

## SMS MANAGER

All the upcoming messages are stroed ina database and you can manage it through this window. Messages are saved with date, name, phone number and message; besides you can save a number with a name (enter it in the name textbox and click save); all the future messages coming from that number will always be identified with the assigned name (as it happens on any cellular phone).

The screenshot shows the 'SMS Manager - 296 saved messages' window. The main area is a table with the following columns: Date / Time, Name, Number, and Message. The messages are listed in descending order of time. Below the table is a control panel with several sections:

- REFRESH**: A button to refresh the message list.
- Name**: A text input field for entering a name, with a **Save** button next to it.
- Configuration**: Two checkboxes:
  - Unlimited MusicLine requests
  - Ignore MusicLine requests from this number
- Action Buttons**: **Select All**, **Delete**, **Mark as read**, **Answer**, and **Print**.
- GSM MODEM**: A section with a modem icon and buttons for **Dial/Answer** and **Cancel**.
- SEND SMS**: A section for sending a new message, including a **Message** text area, a **Number** input field, a **Name** dropdown menu, a **0 / 0 Sent Messages** indicator, and **Cancel** and **SEND** buttons.

The view can be sorted by date/time, name, phone number, message.

In the section SEND SMS is possible to enter a text and one or multiple phone numbers and pressing Sends the message it will come to the out recipient. For your security, you can disable the dispatch of the messages from the configuration of MB Studio.

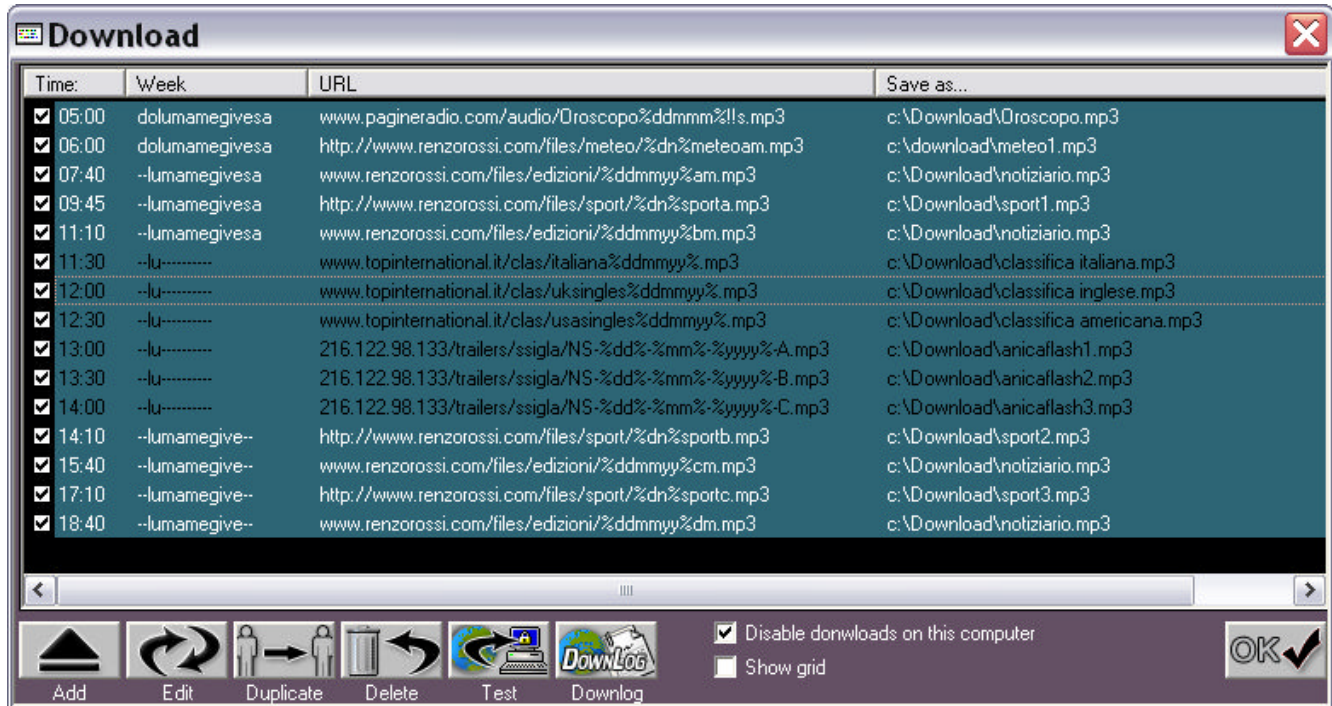
In the section Name there are two other options:

“Unlimited MusicLine requests” remove the requests limit from this phone number. The default requests limit can set in Configuration/SMS (remember to click save when changing this option)

“Ignore MusicLine requests from this number” will ignore any song request from this number (remember to click save when changing this option)

If you need to send a message to all the numbers in list, click **Select All** and then on **Reply**, enter the message and click **Send**

## DOWNLOAD



MB Studio features an automatic download manager

Commonly it deals with audio files to rebroadcast on his own station (news-bulletins, programs, promo, etc etc). It is for instance possible to stipulate an accord with a press agency that daily supply to you news-bulletins and MB Studio can automatically download it according to a precise schedule.

To schedule a download you need a permanent connection to Internet (DSL) and you must know:

- 1) exact url of the file to be downloaded (for instance [www.cnnnews.com/nmews.mp3](http://www.cnnnews.com/nmews.mp3))
- 2) login / password if necessary to access the service
- 3) times and dates where you have to download that file
- 4) it is also advisable to create a special folder in the computer where to download the files (for instance C:\bulletins).

Once the 4 steps above are done you can schedule a new download in MB Studio.

You go to the menu Edit/Download and click Add that will display this window:

you insert therefore the url, the possible login and password (leave them blank if unnecessary), the path and name to save the file; you must set the week days and the time where to run the download.

Once the file has been downloaded, nothing happen unless you have scheduled to play that file in a minilist, playst or in a break Studio.

Therefore you open MB SPOT, you create a new break with a time of at least 2 minutes after the programmed download; for instance if you make a download at 07:00 o'clock it is not advisable to play it before 07:02; if the file is of big size and the net is slow the download will not complete in time. We recommend you to set the property "No Mix" when you schedule a downloading file in a playlist or break, so if MB Studio start playing th is file while it is still downloading, the play will not break suddenly.

Till now we talked about a single and simple download, but frequently you will have to schedule multiple downloads during the day. Before proceeding, you have to understand the method, your supplier, name the files.



A press agency that supply 4 news-bulletins could for instance call them with a progressive number: news1 news2 news3 news4 or using the edition time: news8h news12h news16h news18h or using the date: news19102003 news20102003.

Therefore you have to understand what logic is used by the the supplier to name sequential files.

In the best case the supplier could maintain the same file name for all the editions, and then in this case it is enough for you to duplicate the first download as many times as the editions number to download; you only have to modify the download clock and obviously to create as many breaks in MB SPOT or as many playlists.

If the supplier names the files with the current day of the week or with the current date or with the current time, you have to resort to the wildcards.

Example: we have to download everyday the horoscope from a site that use the following sequence name horoscope19-10-2003.mp3 horoscope20-10-2003.mp3 horoscope21-10-2003.mp3 and so by everyday a different date; then you can schedule a single download in MB Studio as this: [www.horosocope.com/horoscope%dd%-%mm%-%yyyy%.mp3](http://www.horosocope.com/horoscope%dd%-%mm%-%yyyy%.mp3)

The downloads with the wildcards, don't work with Internet Explorer and they work only besides and exclusively in the day or in the schedule in which the supplier update the files on its site. If trailers are updated on Mondays it is normal the download return error if you run it in the other days.

Finally:

- 1) the downloads can be scheduled both on the on air pc or in a post production pc.
- 2) Pay attention that only one of your PC are enabled to download, and disable all other computer enabling the option "Disable downloads on this computer"
- 3) Pay attention that the "Save as..." path is existing and correct, otherwise the download will fail.
- 4) If you don't have a permanent connection to Internet, MB Studio will try to manually connect to Internet only if you set Internet Explorer, menu Tools / Internet Options - connections to always use the deafault connectionn (and obviously that a default remote connection exists).

Note: if you download a .exe file, MB Studio will automatically run it once dwnloaded, therefore exploiting this characteristic is possible to automatically decompress some archives.

Complete wildcards list:

%dn% = weekday name in 2 characters (Ex: mo, tu, we, th, fr, sa, su)

%ddd% = weekday in 3 characters (Ex: mon, tue, wed, thu.....)

%dddd% = complete weekday name (Ex: monday, tuesday, .....)

%d% = monthday number 1-31(1 or 2 characters)

%dd% = monthday number 01-31(2 characters)

%m% = month number 1-12 (1 or 2 characters)

%mm% = month number 01-12 (2 characters)

%mmmm% = month name (january, february...)

%yy% = year (05)

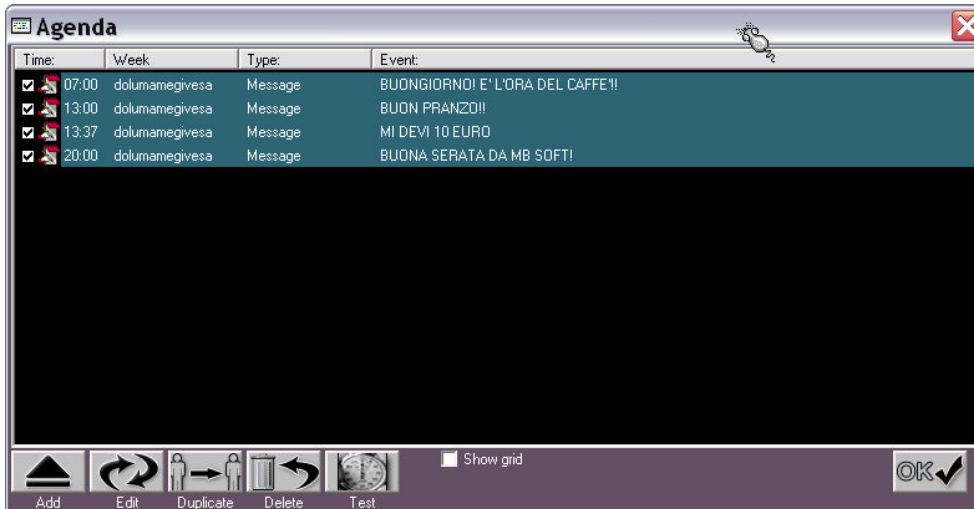
%yyyy% = year (2005)

%hh% = hours 00-23

%nn% = minutes 00-59

%sy% = year of the first song of the on air list

# AGENDA



From menu Edit / Agenda, you can schedule some "events" that MB Studio will perform on given days of the week. This agenda is entirely independent from playlists or breaks, it doesn't replace neither the playlists neither MB SPOT but it allows to make some things that are not possible with the other procedures.

Click on ADD :



Message will display the text entered in the label. The message will flash on the red box of the news line. It's good to remember dj' s or technicians to do something!

Audio file select an audio file, that will play, overlapping the on air item. If for instance there is a song on air, this file would overlap to the song (the song would be lowered of volume however). In practice this function is useful in the shops, to easily schedule some audio announcements, or in the case of a radio station to random overlap the broadcasting program; example, the Saturday evening you broadcast a long mp3 file, 3 hours, but, sometimes, you want overlap it with a jingle station; then you will have to schedule the file in a break of MB SPOT or in a playlist at 21 h and then you schedule some audio files in the agenda (for instance at 21:30,22,22:30 o'clock etc etc) in which will play the jingle.

SHELL command will be usefull for expert users to exactly run a command as the same you can do from Start/Run in Windows; a common task should be to run a particular application on some times and days; this function is similar to Windows Schedule Tasks.

Internal command of MB Studio, choosing from a list of available commands.

SMS Signature Sending as SMS message, you can precede the body message from a short text, even a sponsor or more rotation sponsors according to the hours or of the days....

# MB SPOT

MB SPOT is the break scheduler thanks to which is possible to schedule commercials, news-bulletins, external sources, live or satellite feeds at given days and times.

Here are the first steps to be done, with particular reference to whom has just purchased the software.

First steps with MB SPOT:

1) first, we need to create all daily break times; for instance, if a station needs to broadcast a break every 15 minutes, it's necessary to create all the empty breaks since 00:15 to 23:45 o'clock

2) click "New break"

3) the break window will display with all the details of the sequence; on the right set the scheduled time for the break changing it from 00:00:00 to 00:15:00, enable the flag "Before/After Break", enter a title (for instance "Commercials") and click OK.

4) Now it's possible to clone this break for the whole rest of the day (avoiding to have to repeat the previous step several times).

5) select the break on the list, and click on "Copy Break", the copy window will display.

Enable the flag on "Repeat copy every:" and set the adjacent clock to 00:15:00 (this is the time interval between breaks) then set "Repeat the copy until:" to 23:45:00 and finally click Copy.



Now, all break times are created; at any time you can create new break times or modify or delete one of them.

## RECORDING NEW COMMERCIALS

You can plug a microphone or your analogical mixer to the audio card input and record commercials, news, or any kind of audio file.

A builtin recorder is accessible by clicking on RECORDER



The box File allows you to select a new file to record or an already existing file (Click the disk icon)

The Profile allows you to specify record quality

The Type allows you to select among WAV, MP3, OGG, WMA

Input set the audio card input you want to record

When you have recorded a new commercial or a news-bulletin, you can close the recorder.

## ADDING NEW COMMERCIALS

To schedule a commercial you must first add it to the customers list

Customer	Genre	Last change:	Durat...
ABBANDONO_CANI_RETTORE.MP3	ANIMALI	2004/09/07 - 11.39	00:36
ABBANDONO_CANI_TANZI_PAMBIERI.MP3	ANIMALI	2004/09/07 - 11.39	00:29
ALC3.MP3		2004/09/07 - 11.40	00:31
MINISTERO ECO-FINANZE.MP3		2004/01/04 - 03.37	00:25
PRONTOCUORE_TRAFFICO.MP3	PUBBLICITA' PROGRESSO	2004/01/05 - 01.14	00:33
SICUREZZA L.COLO'.MP3		2004/07/13 - 01.30	00:23
TRASPORTI_MINISTERO.MP3	PUBBLICITA' PROGRESSO	2003/11/20 - 00.28	00:30

Recorder Add Edit Delete Audio Editor Print Report Rename Replace Show grid

left click Add and select the new commercial

2) If you like you can enter some fields (genre, address, notes)

**Form: MINISTERO ECO-FINANZE**

N.	TIME	WEEK	START	STOP	P...

File: **MINISTERO ECO-FINANZE.MP3**  
 Genre:   
 Address:   
 Fiscal data:   
 Notes:   
 Duration: **--:25** Items calculation: **0**  
 Include items with similar name  
 Add Times Generate Times Import Export OK

3) Now you can choose to manually schedule this commercial by clicking Add Times or let MB SPOT to automatically schedule it by clicking on Generate Times

if you click ADD TIMES

4) browse the breaks list and click on a break time that suite your needs and add the commercial

**Break time 07:30:00 PUBBLICITA'**

Pos...	Item	Week	Start	Stop	Duration	Pr

Add MINISTERO ECO-FINANZE...  
 Add File  
 Add News  
 Add Random File  
 Add Announcement  
 Add Event  
 Add Music Genre  
 Add URL

Goto: **07:30:00**  
 Time: **07:30:00**  
 Force:  **--:--:--**  
 Before/Between/After:  Enabled

5) the commercial will be inserted in the break list, now right click it and choose Calendar

**Calendar of: MINISTERO ECO-FINANZE.MP3**

Week:  domenica  lunedì  martedì  mercoledì  giovedì  venerdì  sabato  
 Execute as:  
 Execute as:  
 Even weeks only  
 Odd weeks only  
 unless Holiday

Start broadcast on: **ottobre 2004**  
 lun mar mer gio ven sab dom  
 40 27 28 29 30 1 2 3  
 41 4 5 6 7 8 9 10  
 42 11 12 13 14 15 16 17  
 43 18 19 20 21 22 23 24  
 44 25 26 27 28 29 30 31  
 45 1 2 3 4 5 6 7  
**mercoledì 20 ottobre 2004**

Stop broadcast on: **ottobre 2004**  
 lun mar mer gio ven sab dom  
 40 27 28 29 30 1 2 3  
 41 4 5 6 7 8 9 10  
 42 11 12 13 14 15 16 17  
 43 18 19 20 21 22 23 24  
 44 25 26 27 28 29 30 31  
 45 1 2 3 4 5 6 7

APPLY  
 to all MINISTERO ECO-FINANZE.  
 only to this item  
 to all items in this break  
 Default for this break  
 APPLY  
 CLOSE

6) set the start and stop date and the weekdays in which this commercial must go on air then APPLY settings

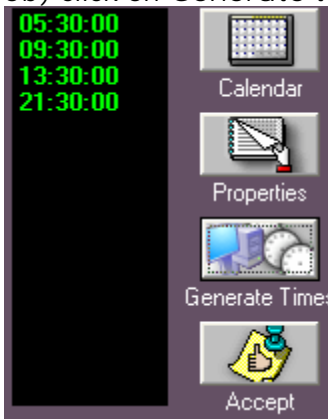
7) click OK

8) repeat steps 4 to 7 for other times in which you need to broadcast this commercial.

### If you click GENERATE TIMES

4b) set the commercial items amount to schedule, set the breaks title where to schedule, set the start and stop time to schedule in, set the calendar and/or properties

5b) click on Generate times icon. MB SPOT will suggest you some breaks....



if you're happy with it, click Accept icons, otherwise Close the window and go back and try with Add Times

Notes:

Remember to save the breaks list before exit from MB SPOT, you can do it by selecting menu Breaks list / Save as default

### COMMERCIALS ROTATION

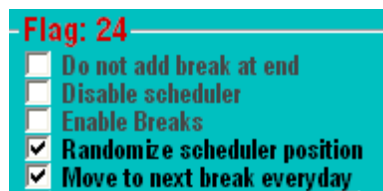
**Form: TRASPORTI\_MINISTERO**

N.	TIME	WEEKDAYS	START	STOP	P..
1	03:30:00	dolumamegivesa---	20.11.2003	---	6
2	05:30:00	dolumamegivesa---	20.11.2003	---	3
3	07:30:00	dolumamegivesa---	20.11.2003	---	3
4	09:30:00	dolumamegivesa---	20.11.2003	---	2
5	11:30:00	dolumamegivesa---	20.11.2003	---	4
6	14:25:00	dolumamegivesa---	20.11.2003	---	2
7	17:30:00	dolumamegivesa---	20.11.2003	---	6
8	23:30:00	dolumamegivesa---	20.11.2003	---	6

You can enable commercials rotation setting rotation to each customer

1) Run MB SPOT, double click a customer in the list, and you'll get the times list:

2) right click an item and select properties, here you have to set "Randomize scheduler position" and/or "Move to next break everyday"



Randomize scheduler position will randomly change the item position into the current break. Example: today first, tomorrow third, and so on....

Move to next break everyday will move the commercial to the following break of the same title

Example: today at 07:15am, tomorrow at 07:45am, and so on....(Assuming that the breaks at 07:15am and 07:45am have the same title ex ("COMMERCIALS"))

Once you activated one or both rotation flags, click to APPLY (keep "to all" enabled)